

WHAT IS

#020

"Show me a way, and explain what you have shown." - Rumi Fhr Ma Fhr



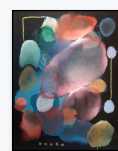
Forbidden Colors



Forbidden Colors
Acrylic and Oil on manipulated canvas
110x70cm
2020



Forbidden Colors



Forbidden Colors

Best viewed with Leonard
Barrisfeld's "Symphony No. 2"
Mute in the background.

How much drama is too
much drama? (rhetorical
question)

Circle Cut Out: Some will feel it is an unnecessary move, but I would tend to disapprove as this surface manipulation plays an important role in the composition; Lucio Fontana claimed in his Spacial Concept, "I have created an infinite dimension". The manipulation, (which I extensively used in the years 2018 and 2019), transmutes the painting closer to the world of ideas, perhaps sitting at the gate that separates the conceptual and the representative realms. I want the viewer to question the canvas, to question me and ultimately himself. We are not mere spectators. On that account, I have used Fontana's infinite dimension in "Forbidden Colors".

#001

#002

#003

#004

#005

#006

#007

#008

#009

#010

#011

#012

#013

#014

#015

#016

#017

#018

#019

Read previous issues

All the newsletters are designed on a word processor.

If you have any questions, comments or suggestions about this newsletter or its content please let me know. If you do not wish to receive this newsletter let me know.