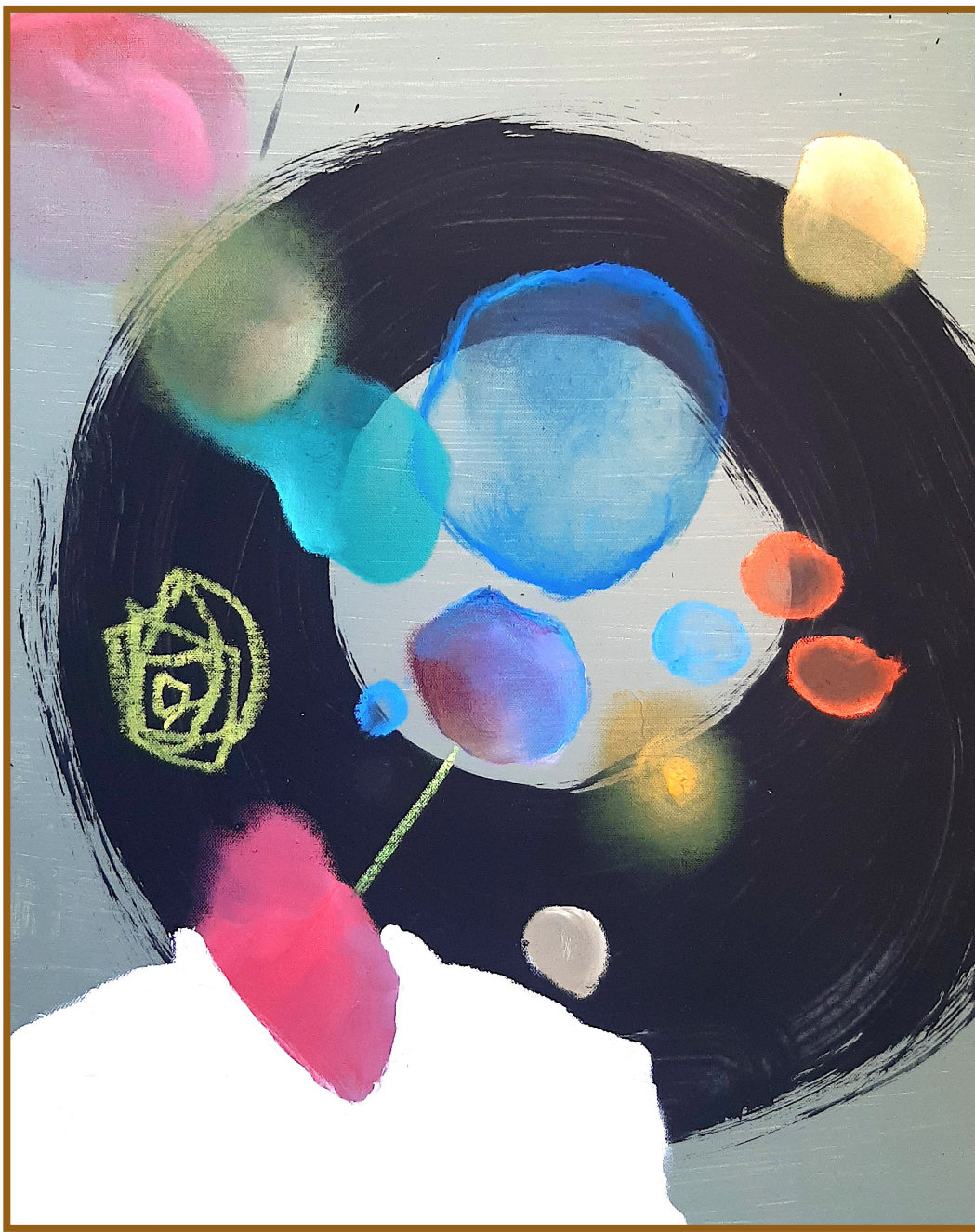


# WHAT IS

#018

*For the sail on the ship of our being is our ideal. When there is a sail, the wind can carry us to mighty places. When there is no sail, all words are merely wind.*

(Rumi - Fihi Ma Fihi/20)



**Portrait Of A Sailor**  
Acrylic/oil on canvas board 50x40 cm  
(JAN 2021)



## IMAGINARY WALLS FOR MOBILE



### **ANNOUCEMENT**

I am using [Verisart](#), an artwork certification blockchain technology for my work. If you wish to receive a temper-proof certificate of authenticity for the art you own, please take a photo of the work and email it to me. I will be more than happy to serve.

- #001
- #002
- #003
- #004
- #005
- #006
- #007
- #008
- #009
- #010
- #011
- #012
- #013
- #014
- #015
- #016
- #017

[Read previous issues](#)

If you have any questions, comments or suggestions about this newsletter or its content please let me know. If you do not wish to receive this newsletter let me know.